

Important Safety Instructions

When using this product, basic safety precautions should always be followed to reduce the risk of fire, electric shock, and injury to persons, including the following:

1. Read and understand all instructions.
2. Follow all warnings and labels marked on the product.
3. Unplug this product from the wall outlet before cleaning. Do not use liquid cleaners or aerosol cleaners. Use a damp cloth for cleaning.
4. Do not use this product in an outdoor environment or near water, for example, near a bath tub, wash bowl, kitchen sink, or laundry tub, in a wet basement, or near a swimming pool.
5. Do not place this product on an unstable cart, stand, or table. The product may fall, causing serious damage to the product.
6. Slots and openings in this product and the back or bottom are provided for ventilation to protect it from overheating; these openings must not be blocked or covered. The openings should never be blocked by placing the product on the bed, sofa, rug, or other similar surface. This product should never be placed near or over a radiator or heat register. This product should not be placed in a built-in installation unless proper ventilation is provided.
7. This product should be operated only from the type of power source indicated on the marking label. If you are not sure of the type of power supply to your home, consult your dealer or local power company.
8. This product is equipped with a three wire grounding type plug, a plug having a third (grounding) pin. This plug will only fit into a grounding type power outlet. This is a safety feature. If you are unable to insert the plug into the outlet, contact your electrician to replace your obsolete outlet. Do not defeat the safety purpose of the grounding type plug. Do not use a 3-to-2 prong adapter at the receptacle; use of this type adapter may result in risk of electrical shock and/or damage to this product.
9. Do not allow anything to rest on the power cord. Do not locate this product where the cord will be abused by persons walking on it.
10. Do not overload wall outlets and extension cords as this can result in the risk of fire or electric shock.
11. Never push objects of any kind into this product through slots as they may touch dangerous voltage points or short out parts that could result in a risk of fire or electrical shock. Never spill liquid of any kind on the product.
12. To reduce the risk of electrical shock, do not disassemble this product, but take it to a qualified serviceman when some service or repair work is required. Opening or removing covers may expose you to dangerous voltages or other risks. Incorrect re-assembly can cause electric shock when the appliance is subsequently used.
13. Unplug this product from the wall outlet and refer servicing to qualified service personnel under the following conditions:
 - a) When the power supply cord or plug is damaged or frayed.
 - b) If liquid has been spilled into the product.
 - c) If the product has been exposed to rain or water.
 - d) If the product does not operate normally by following the operating instructions. Adjust only those controls that are covered by the operating instructions because improper adjustment of other controls may result in damage and will often require extensive work by a qualified technician to restore the product to normal operation.
 - e) If the product has been dropped or has been damaged.
 - f) If the product exhibits a distinct change in performance.
14. Avoid using a telephone (other than a cordless type) during an electrical storm. There may be a remote risk of electric shock from lightning.
15. Do not use the telephone to report a gas leak in the vicinity of the leak.
16. Do not exceed the maximum output rating of the auxiliary power receptacle.



Quick Start Guide

What's Included

- iBoot-WiFi Unit
- Quick Start Guide

Available Online

dataprobe.com/support_iboot-wifi.html

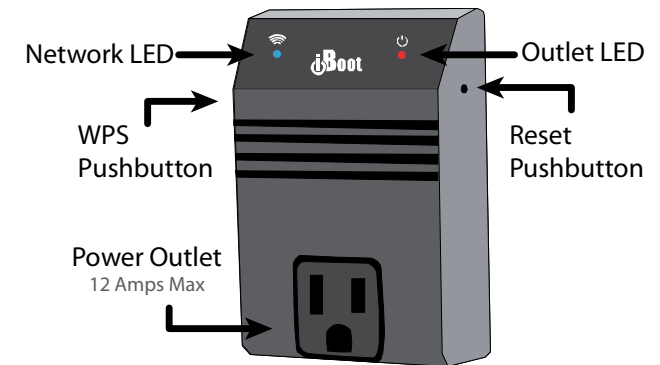
- Complete Product Manual
- Latest iBoot-WiFi Firmware
- Setup and Operation Videos
- Software Developer Tools

Product Registration

dataprobe.com/product-registration.html

- Get Important Safety Notifications
- Special offers only available to registered users
- Receive Firmware Release Notices

Orientation



Outlet LED Red	On	Outlet Power On.
	On with momentary Off (1.2 /.1)	Power On – Cycle in Progress
	Slow Flash (.5s)	Reset to Factory Defaults in Progress
	Off with Momentary On (1.2 /.1)	Power Off – Reboot in Progress
	Off	Outlet Power Off
Network LED Blue	On	Network Connected
	On with momentary Off (1.2 /.1)	Micro Access Point Only Mode
	Slow Flash (.5s)	Network Connection in Progress
	Fast Flash (.1s)	Network Connection Attempt Failed
	Off	Unit not receiving power
WPS Pushbutton	Push and Hold 7 sec.	Initiate WiFi Protected Setup (WPS)
Reset Pushbutton	Momentary Press	Restart iBoot-WiFi
	Press and Hold 10 Seconds	Reset Factory Default

Network Setup

Required: Computer, Tablet or Phone with WiFi and browser.
Name (SSID) and Passphrase of Local Network.

Step 1. Connect to iBoot-WiFi Micro Access Point (Hotspot) to set Local Network Address
Plug in and wait for blinking blue Network LED.
Connect device to WiFi hotspot iBootxxxx. Password is wifi-admin
Open browser to 192.168.10.1
Login to iBoot with user: admin password: admin
Access WiFi Setup Page. From Home page click Setup. Then click Set-WiFi
Select network desired. (Click Scan Networks to update list)
Fill-in Passphrase and click Connect. Wait for iBoot-WiFi, 30 seconds, access network
WiFi Setup Page will re-load with IP Address on the selected network under IP Settings. Note this IP Address for Step 2.

Step 2. Connect via Local Network to Configure and Operate iBoot-WiFi.
Connect the computer to the WiFi Network selected for iBoot
Open browser and connect to IP Address from Step 1
Login to iBoot with user: admin password: admin
Congratulations. Now you can configure your iBoot and enjoy improved network reliability.

Still need help? Watch the videos at dataprobe.com/support_iboot-wifi.html

Operation

iBoot-WiFi uses two username/password credential sets, one for power control only; User and one that also provides access to the setup functions; Admin.

Role	Username (fixed)	Password (settable)
Administrator	admin	admin
User	user	user

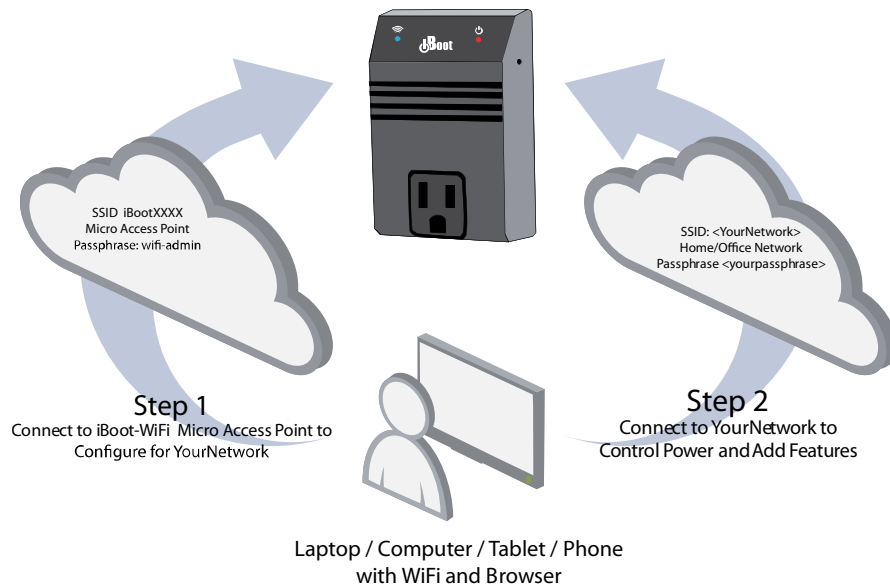
Control Power

To control the power, click on the appropriate **ON**, **OFF** or **Cycle Power** button. During power cycling, the Power Status bar will indicate the temporary status, with a blue background. Once the cycle is complete, the status bar will revert to its original condition. To abort a power cycle, click on either Power On or Power Off buttons. This page provides automatic updates every 1 second.

Additional Features

Read the complete manual to learn how to use all the features of the iBoot-WiFi

- iBoot Cloud Service
- AutoPing
- Scheduling and Logging
- User & Security Management



WiFi Protected Setup (WPS) is also Supported. Press and Hold WPS pushbutton 7 Seconds to initiate connection. Refer to the full manual and your router documentation for further details.

